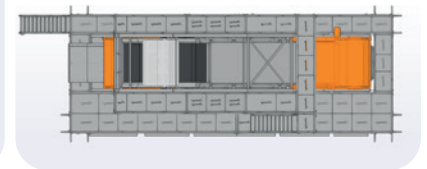
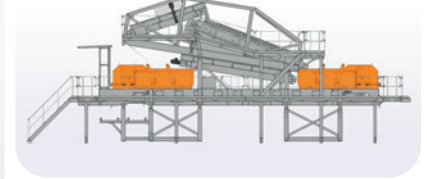
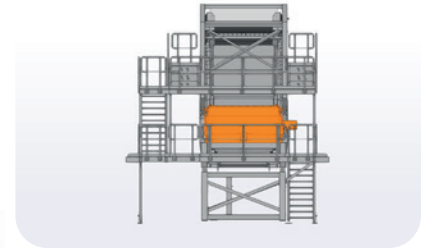
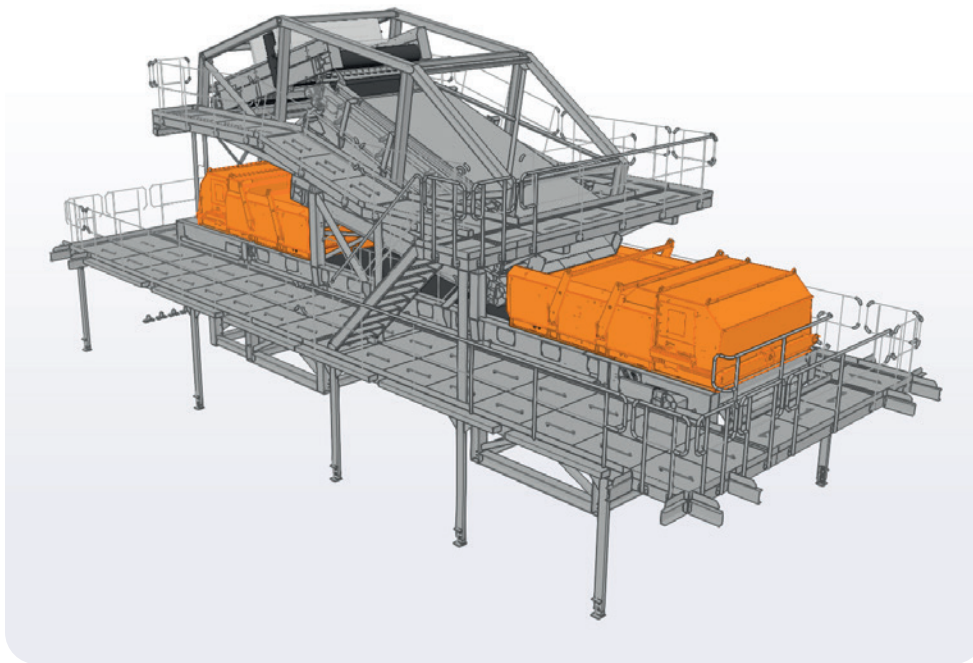


## R4: 2-Fraction screen with EC's module



### Description

- Infeed conveyor belt
- Product distribution system
- HEIN LEHMANN Flip-Flop screen
- Container-frame based construction for easy set-up, breakdown and transportation
- Totally galvanized construction (IBA-proof!)
- Integrated collection conveyor under screen
- (De-)mountable stairways and platforms
- Integrated collection conveyor belt underneath the complete installation
- Control cabinet IP65 'outside' version provided with TRS Modular Plant Control System (MPCS), for stand-alone control or in combination with other modules.

### Optional

- Discharge conveyors for separated materials

### Applications

- IBA (bottom ash) – waste – metals - shredder residues

### Dimensions

#### Transport:

2 truck loads

#### Operational:

17,0 x 3,0 x 8,0m (l x w x h)

#### Weight

Ca. 30t

#### Installed power

20kW

